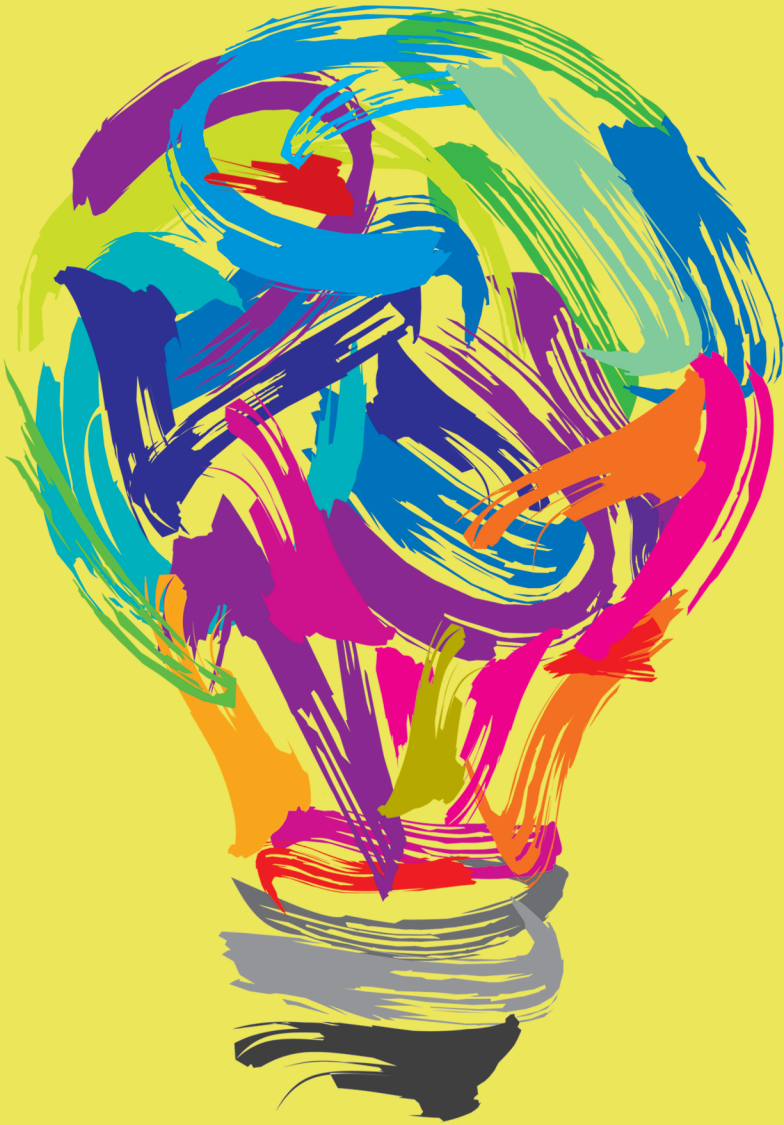


ANNUAL SUMMARY 2022



for our community, *for* always



COMMUNITY FOUNDATION
FOR THE ALLEGHENIES



MISSION

We empower everyone in our community to understand how their philanthropy can leave a lasting legacy in our region.

VISION

We envision an inclusive and engaged culture of philanthropy that grows an abundance of resources that have a perpetual impact in a thriving region.



The Community Foundation for the Alleghenies maintains the highest rank for transparency through GuideStar by Candid, a nationally established source of information about U.S. charities and nonprofit organizations.

OUR TEAM

Angie Berzonski

Associate Director
aberzonski@cfalleghenies.org
814-315-2982

Emily Wood

Grants Administrator
ewood@cfalleghenies.org
814-208-8448

Marisa Lehman

Scholarships & Gifts Administrator
mlehman@cfalleghenies.org
814-225-1266

Bret Sarlouis

Administrative Support Assistant
bsarlouis@cfalleghenies.org
814-208-8279

Mike Kane

President and Executive Director
mkane@cfalleghenies.org
814-225-1247

Dina McGee

Bedford County Director
dmcgee@cfalleghenies.org
814-623-0044

Barb Charney

Accounting Associate
bcharney@cfalleghenies.org
814-208-8237

Kecia Bal

Communications Officer
kbal@cfalleghenies.org
814-208-8394

Katrina Perkosky

Director of Donor Services
kperkosky@cfalleghenies.org
814-208-8411

Lladel Lichty

Somerset County Director
llichty@cfalleghenies.org
814-525-9020

Victoria Kimmel

Accounting Assistant
vkimmel@cfalleghenies.org
814-200-9066

The Community Foundation for the Alleghenies

Thirty-two years ago, a group of community leaders thought that the model of a community foundation would be beneficial.

They weren't thinking of themselves. They were thinking of our community.

The model they imagined would be an umbrella organization under which people and organizations that also care about our community could find a place to do just that. The work started slowly, but, all these years later, this is exactly what we are still doing. That is what this year's summary reflects. I can assure you that everyone's engagement makes our community better, because we see it every day. We know how much your generosity, your involvement, and your positivity matter. You will see a few examples of that in this annual summary, but please be sure to visit our new website, calleghenies.org, for a bigger picture of the work underway in our community because of our donors.

You can also view the full annual report at calleghenies.org/annualreport.

Best wishes, and thank you for your continued support.



Mike Kane
President and Executive Director



Mark Pasquerilla
Board Chair

THANK YOU

As always, there are a lot of people to thank for making the foundation what it is. There are over 130 volunteers who serve on various board, grant, and scholarship committees. The Community Foundation simply would not be able to function in the manner it does without them. Thank you for your efforts.

We also want to take a moment to recognize the dedication and service of two members of our Academic Alumni Committee: Wanda Keller and Wilda Sanna. Both volunteers, who gave generously of their time to support students across our region, passed away this year. They will be missed.

We also appreciate Mark Thomas in Bedford and the Somerset County commissioners, for providing us office space in those counties and AmeriServ Financial for hosting us at our Johnstown office.

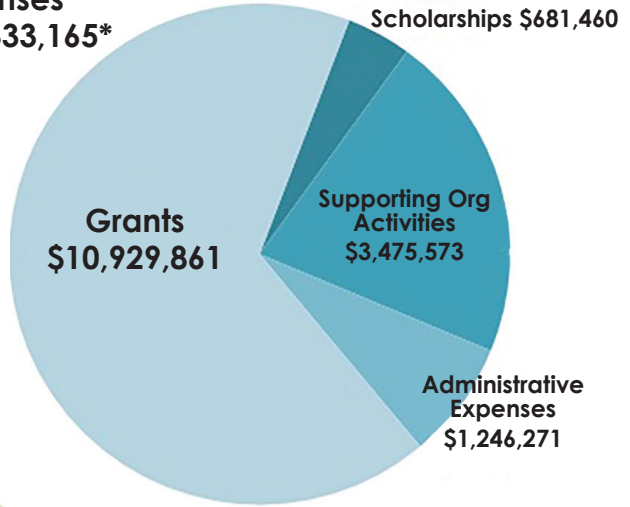
FOR OUR FUTURE



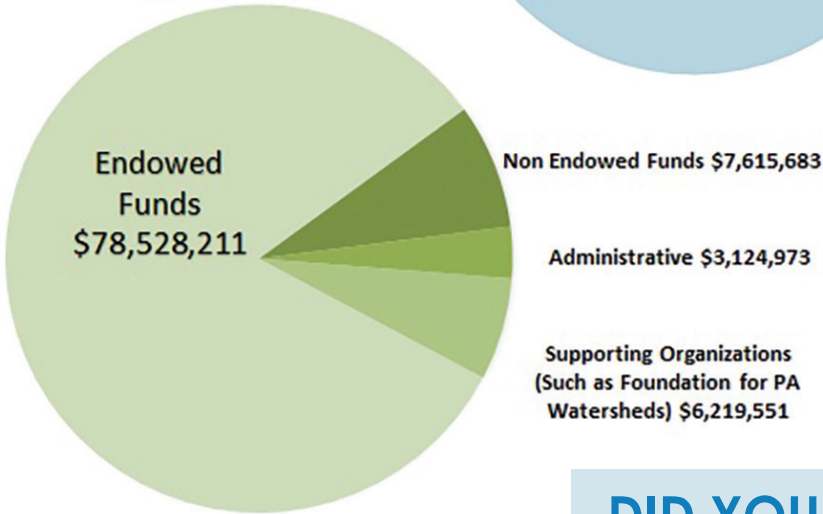
These Morrell Neighborhood School pre-k students—who have since moved on to kindergarten at Greater Johnstown School District—are among the hundreds of preschoolers in our region to benefit from our Early Childhood Education (ECE) Fund over the past year. In this case, a \$90,000 ECE grant to Cambria County Child Development Corporation provided tuition assistance to local families.

See full lists of grants, funds, donors, and financial activity at cfalleghenies.org/annualreport.

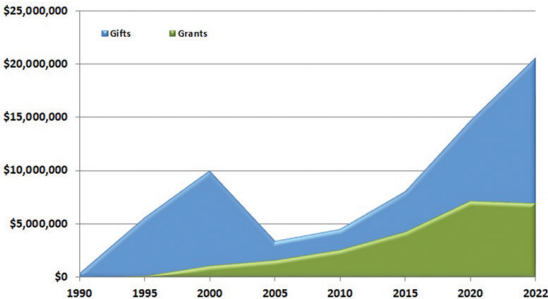
Grants, Scholarships & Expenses
\$16,333,165*



Total Assets
\$95,488,417



32 Year Gift & Grant History



DID YOU KNOW?

The Community Foundation's Memorial Fund was established to help community members honor the legacy of loved ones in a meaningful and permanent way. Donations support unrestricted grantmaking as determined by the Foundation's Distribution Committee, through the Fund for the Future. This special fund is endowed, so any contribution made on behalf of a loved one will be there to support local causes forever. Our new Memorial Scholarship Fund provides a similar service, with contributions directed to support pathways to higher education for local students. Find out more at cfalleghenies.org/unlimited-love.

FISCAL YEAR 2022* AT A GLANCE

GIFTS RECEIVED
\$20,585,146

**GRANTS &
CHARITABLE
DISTRIBUTIONS**
\$15,086,894

FUNDS
910



DONORS
6,538

SCHOLARSHIPS
\$681,460

**SUPPORTING
ORGANIZATION
DISTRIBUTIONS**
\$3,475,573

**YEAR-END
ASSETS**
\$95,488,417

**GRANT
RECIPIENTS**
460

**Unaudited*



For Our Community

Seven years ago, a small group of dedicated people laced up their tennis shoes and started the first Johnstown Walk of Hope after a national cancer organization decided a local walk didn't raise enough money to be worthwhile.

With administrative support of the Community Foundation, the Johnstown Walk of Hope Fund continues to grow and exceed its own fundraising records.

This past summer, the event reached another new milestone, bringing in more than \$104,000—all locally funded, all to help local cancer patients. (See a video overview of this year's event in our digital Annual Report at cfalleghenies.org/annualreport.)

The Johnstown Walk of Hope, which over the past year also started the Somerset Walk of Hope Fund at the Community Foundation, is just one of more than 900 funds the foundation has helped establish and grow over the past 32 years. Partnership funds like the Walk of Hope and the Cambria County Backpack Project are among the ways the foundation exists for our community.

Another is the Community Foundation's new Nonprofit Resource Library, sponsored by Wessel & Company.

This resource is provided at no cost and is available not only to Community Foundation grantees and partnership funds, but also to any nonprofit organization looking to grow and find

funding. This is because the foundation and our donors are invested in the success of a full network of thriving nonprofit organizations hard at work making our region a better place to live today and tomorrow.

The library provides access to a wealth of resources and tools for new and established nonprofits. That includes Candid's Foundation Directory Online (FDO), a comprehensive prospect research tool for fundraisers. Now nonprofits can search the database of more than 17 million funding sources with help from a Candid Certified FDO Expert and Trainer: CFA Grants Administrator Emily Wood. In addition

to access to the database, the library also houses Candid's e-book collection through OverDrive. Physical reference resource topics include grant-seeking, philanthropy, volunteerism, proposal writing, nonprofit management, fundraising, and community and economic development.

The library also hosts regular training sessions for those interested in learning about topics like writing proposals or creating project budgets, and you can find additional guidance and answers to frequently asked questions about the library (like what to bring with you when you visit) on our new website.

To find out more or to book an appointment to use the library, visit cfalleghenies.org/library or send a note to ewood@cfalleghenies.org.



New Tools and Resources Online



If you are from Cambria, Somerset, Bedford or Indiana counties, it's likely you've interacted with the Community Foundation on some level in the past, whether you realize it or not.

Maybe it was as simple as purchasing an event ticket that supported a fund we manage. Or, you've worked directly with us to support a cause that's important to you by establishing your own fund.

In any capacity, we are honored to be here for you, and we are always looking for ways to improve how we serve our donors and community. Our new website, with more tools and resources than ever before, is designed to do just that.

We've worked hard to make it easy to find exactly what you're looking for when you visit us online, but we also would love to paint a clearer picture of what we do and how you can get involved. Please take a few minutes to explore.

- ◆ If you're one of our fundholders, it's likely you've visited our site in the past to access your fund online. We've kept the online access portal in exactly the same spot, and now you can find out more about the services we offer under the Learn dropdown on the Home Page.

- ◆ If you're a student or the parent of a student, you might have checked us out to apply for one of the hundreds of scholarships established here. Now you can access our newly streamlined application, find FAQ answers, or create a login to apply from the Student box on the Home Page.

- ◆ If you're a nonprofit, you might have been to cfalleghenies.org to look for funding opportunities and guidelines. You can find quick links to our Nonprofit Resource Library, Grant Opportunities, and the Grantee Login from the

Nonprofits box on the Home Page.

- ◆ Or, if you're a community member who has donated to one of the 910 funds we manage, you may have clicked into our website from a link someone shared with you. To donate to any of our funds, or to search for a fund, click the Give Now box under the Give dropdown on the Home Page.

We serve our community in many more ways than most people realize, but we've worked hard to make it simpler to find exactly what you're looking for when you visit us online. Our "How do I" feature is one addition we hope is especially helpful in getting you exactly where you want to go.

Looking to submit a final grant report? Need help finding a wealth advisor? Want to see which organizations have received a grant from the Community Foundation?

Just click the red "How do I" button at the top right to find answers.

You can also search by the audience category that most suits your needs: donor, nonprofit, student or wealth advisor. If you're looking for county-specific information, choose your county along the top bar.

Finally, if you do not know much about the Community Foundation, this new website is a great place to start. We hope you'll find what you need faster, but we also hope you'll take a few minutes to get to know us a little bit better while you're here. From our strategic grantmaking to our legacy creation, we are working to benefit our community every day, forever, and we invite you to be part of that.

Visit our new website to get started: **cfalleghenies.org**.





For Somerset County

The Somerset County Endowment has seen much success and support over the past year, as we reached our first \$1 million raised. This first milestone ensures long term, continued grant funding for Somerset County organizations that do their best work in their respective fields. These organizations support our children, seniors, firefighters, basic human needs, education, parks and trails, memorial sites, conservation, economic development, history, arts, and so much more.

Many new funds were opened this year. Two of them are unique funds, including a family's longtime charitable giving in our community, and a second will breathe new life into (and protect) a historical site that will honor the past and give to the future.

The Riggs Family Foundation is now held and administered by the Community Foundation. The Riggs family has supported hundreds of projects all around the region for many years, thanks to the generosity of Bill and Dan Riggs, their families, and devoted employees. The next generation is honoring their fathers' legacies and generosity, by fine-tuning and focusing their dollars to programs and organizations that make an impact in our community.

They each value the community that their families have helped to build and support, and they recognize their part in moving that work

forward. We are proud to work alongside them in that effort.

Ankeny Square Cemetery, located in the heart of uptown Somerset, is the resting place of Peter Ankeny, a key founder of Somerset. There are numerous American Revolution, War of 1812, Mexican War, and Civil War veterans buried there, as well as statesmen, Senators, House of Representative members, an Ambassador, Attorney General, Secretary of State, the great grandparents and grandparents of Amelia Earhart and many more—all interred before 1915. This was also the site of two major churches that each continue to flourish in Somerset. Looking to the future, the current Ankeny Square board worked with the

Community Foundation to petition the courts to turn over the site to the foundation to manage in perpetuity, and to help ensure the significance of that place so the physical site will not be lost. Again, we are proud to be entrusted with this work.

These are just two examples of what Somerset Countians do well. We look to the future, considering what life will be like for generations to come, and we always look to the past to honor those who made this beautiful place home to the many hard-working individuals who live here, to the hundreds of thousands who call our county a second home on weekends, and to the millions of tourists who visit our county because of its preserved beauty, history, and the people who live here.

The Somerset County Endowments' committed Advisory Board members and Grants Committee members are proud of our ability to focus on the needs of our community now, and through our efforts, forever. Find out more about how you can get involved at cfalleghenies.org/somerset.



Ladel Lichty
Somerset County
Director



Riggs Family
Foundation



For Bedford County

What can we say about Bedford County? We can say that Bedford County residents and natives care for each other. We can say that Bedford County supports community causes. We can say that Bedford County is generous in giving.

The new continual giving program, Bedford County Change Makers, has completed its first year. We currently have 35 members and have raised over \$7,500. This means that a Bedford County nonprofit group, which applies for a Fall grant, will get a special grant of \$3,626. The grant will be determined by the members of the Bedford County Change Makers, with an announcement to be made at a special event in

October. The goal is to create more interest in the community so that we can grant much more in 2023. We are also thrilled to share that First Commonwealth Bank has partnered with Bedford County Change Makers by offering to match donations, up to \$2,500, for the '22/'23 fiscal year.

The partnership funds in Bedford County have been very busy this year, and charitable giving has been impressive. The Bedford County Pink Ribbon Fund held a "pink jail" at the Farmer's Market in downtown Bedford, raising a total of \$15,000.

Veterans Grove in downtown Bedford has launched a new fundraising initiative: The group is selling bricks to replace the current walkway in Veterans Grove. The bricks will have the name and the years that Bedford County natives served in the military. The walkway will be set up as a

timeline, beginning with the War of 1812 to present day. Working with the Community Foundation's Bedford County Endowments, the group has already raised funds for three monuments, World War II, Korean, and Vietnam. The World War II and Vietnam monuments were created by local artist Wayne Hyde. Again, this is part of who we are. We honor our local citizens and their sacrifices.

Scholarship awards for Bedford County were in excess of \$30,000, with another scholarship fund opened in 2022. With help from the Bedford County Advisory Board members, Fiscal Year 2022 was another year of charitable giving in Bedford

County. We look forward, always, to more support from our community.

To find out more about how you can get involved, visit cfdalleghenies.org/bedford.



Dina McGee
Bedford County
Director





PAULINE H. L. GORDON
FOR DISTRICT JUSTICE
District 1-1
DESERVING — EXPERIENCED — DEDICATED
TRAFFIC COURT MAGISTRATE for many years
12 Yrs. ATTENDED SCHOOL FOR J. P.
13 Yrs. ALDERMAN — 20 Yrs. ASSESSOR

2022 New Fund List

AAUW Johnstown Branch Fund
To provide support for all efforts and activities of the American Association of University Women Johnstown Branch.

A. Keith McGraw Memorial Fund
To provide support for programs that feed the hungry or promote animal welfare in Cambria County.

Amelia Vibostok Memorial Fund
To provide support for charitable causes as advised by the donors.

Amy Gresh, earRNed Scholarship Fund
To inspire local students to pursue healthcare careers by providing scholarship support for post-secondary nursing education.

Ankeny Square Cemetery Fund
To benefit the perpetual care, and maintenance of the Ankeny Square Cemetery under the direction of the Community Foundation for the Alleghenies.

Arbutus Park Nursing Scholarship Fund
To provide support for educational costs for nurse employees of Arbutus Park Retirement Community.

Beaverdale Library Fund
To provide a perpetual source of income to benefit the Beaverdale Library to meet the needs of the library patrons.

Beaverdale Library Garden Fund
To provide support for the maintenance of the Beaverdale Library Garden and support for the children's programming held at the library.

Beaverdale Sportsmen's Association Fund
To benefit all efforts and activities of the Beaverdale Sportsmen's Association, which was created to provide social enjoyment for the moral, social, and intellectual improvement of its members and to exercise fair and ethical sportsmanship and environmental stewardship for the sustainability of the Association and the environment, and for the preservation of game and fish, and the enforcement of game laws.

Bette Brown Slayton Fund
To provide support for charitable causes as advised by the donor.

Blooms of Hope Fund
To provide support for cancer patients in financial need in Somerset County.

Boyd Murray and Rev. Janice Murray Donor Advised Fund
To provide support for charitable causes as advised by the donors.

Cambria County Medical Society Fund
To provide support for the Cambria County Medical Society, which promotes the professional, academic, and charitable endeavors of the physicians of our community.

Cancer and Environmental Network of Southwestern Pennsylvania Fund
To support the activities of a network of health care professionals, researchers, cancer-impacted people, environmental leaders, community-based organizations and others to raise awareness about how pollution contributes to the high rates of cancer and catalyze action to reduce cancer risk.

Capitalization Cohort Pilot Fund
To provide support to educate nonprofit organizations to increase their financial literacy with customized planning and financial advisory support to ensure they are well-prepared for future funding in a sustainable way.

Chalmer and Faye Dilling Memorial Scholarship Fund
To provide a \$500 scholarship annually to support a graduating senior at Central Cambria School District who resides in Jackson Township, will be attending a 2-year technical/trade/career post-secondary program, and has displayed good citizenship.

Charles and Doris Mickens Fund
To support charitable efforts, in memory of Charles and Doris Mickens.

CT 12th Man Club Fund
To provide support for the Conemaugh Township Football program, Pee Wee through Varsity level, including player scholarships, equipment, meals, and other expenses.

Curtis Community Partnership Fund
To provide support for charitable work and volunteerism in the greater Casselman Valley Region and around the world.

Elizabeth Lubert Memorial Scholarship Fund
To provide scholarship support for a graduating senior at Northern Cambria High School who has been accepted to a two- or four-year post-secondary school to study music, music education, music therapy or any similar fine arts program.

Flood City Thunder Senior Scholarship Fund
To provide scholarship support for a high school senior from Cambria, Somerset, or Indiana County who will be pursuing post-secondary education in a healthcare field at a two- or four-year institution.

Forest Hills Regional Alliance Fund
To provide support for the community development efforts of the Forest Hills Regional Alliance in enhancing the region it serves.

Garrett Community Fund
To provide support for community efforts, and raise monies to better the community of Garrett and its residents.

George David Dooley Foundation Fund
To support charitable efforts that were important to George, including Tourette Camp USA, the Humane Society of Somerset County, Camp Allegheny, Christ the Savior Seminary, and a scholarship for students at Shade-Central City High School who plan to major in a science or technology field and demonstrate financial need.

Great Allegheny Passage Maintenance Reserve Fund
To establish a maintenance reserve fund with two goals: first, to ensure the long-term quality and safety of the Great Allegheny Passage and C&O Canal Towpath as described in the Organization's Maintenance Reserve Fund Policy, to generate investment income to be reinvested in the Fund to provide for growth of the Fund.

HAHC Scholarship Fund
To provide scholarship support for individuals in the regions we serve who are seeking to further their education and training in the field of primary medical care.

Herald and Jane (Rummel) Griffith Memorial Maple Spring College Scholarship Fund
To provide a \$1,000.00 scholarship for a qualified candidate who must be either a member of the active congregation at Maple Spring Church, or the children, grandchildren, and other family members of the congregation, as screened and qualified by the church finance committee.

Hometown Heroes Scholarship Fund
To provide scholarship support for graduating senior students attending schools within Cambria County.

Johnstown Ridgebacks Fund
To provide support for the Johnstown Ridgebacks youth mountain bike team.

Kenneth "Big Ken" Dranzik Memorial Scholarship Fund
To provide scholarship support for a qualified student in Greensburg-Salem or North Star School District, with a cash scholarship award.

Larry R. Masrine Memorial Scholarship Fund
To provide scholarship support for a high school junior or senior or a freshman community college student. Eligible students will have attended a high school located within Cambria County or Windber Area School District and have financial need. The scholarship will be a repeating award, up to four years, as long as the student is making satisfactory progress toward graduation.

Laurel Highlands Pickleball Association Fund
To provide support for the creation, maintenance, and continued use of pickleball courts in Roxbury Park and the promotion of the sport of pickleball throughout the Laurel Highlands.



Love Our City 814 Fund

To provide support for all efforts of Love Our City 814, a community-based initiative to provide programming and education for the Greater Johnstown region's youth so that they are empowered to become productive members of the community.

Luke Trotz Memorial Scholarship Fund

To provide scholarship support for graduating senior students at Central Cambria High School who participate in the esports program.

Master Sargent George C. Schilling Memorial Scholarship Fund

To provide scholarship support in honor of an outstanding veteran, George C. Schilling, to help a senior student at Conemaugh Township further their education at a trade school, college, or in the military.

Matt Matusko Memorial Welding Scholarship

To provide for two annual \$750.00 scholarship awards for qualified senior applicants enrolled in the Welding program at the Somerset County Technology Center.

Memorial Scholarship Fund

A fund created to honor the legacy of your loved one. Donations support pathways to higher education for local students, as determined by the Community Foundation. Contributions to this fund have been received in memory of the following: Vanessa Hyatt Wiley.

Minersville Action Committee Fund

To provide support for projects that help to improve and revitalize the Minersville neighborhood.

Neal and Marjorie Stager Endowment Fund for Holy Family Parish

To provide general support and maintenance for Holy Family Parish, located in Portage, as determined by the finance committee and the parish priest.

Patrick Fasano Memorial Scholarship Fund

To provide scholarship support for high school seniors at Solanco, Rising Sun, and Octorara High Schools.

Pauline H.L. Gordon Museum Fund

The purpose of this fund shall be to provide support for the creation and maintenance of the Pauline H.L. Gordon Museum at the Clara Barton House and Gardens.

Popp Family Fund

To provide support for charitable causes as advised by the donors.

Quarter Billion Celebration Fund

A fund created to celebrate the Community Foundation achieving the milestone of \$250,000,000 in assets.

Richland Township Volunteer Fire Company Live-In Program Scholarship Fund

To provide scholarship support for students that are accepted into the live-in firefighter program at Richland Township Volunteer Fire Company.

Ric Szelong Memorial Scholarship Fund

To provide scholarship support for graduating senior students at United High School in order to remember an individual's impact on the United community. In Mr. Szelong's memory, we want to continue to support the students of United on their journey of academic learning into post-secondary education.

Riggs Family Foundation Fund

To support charitable causes as advised by the donors.

Robert Lee Veney, Jr. Memorial Scholarship Fund

To provide an annual scholarship to an outstanding senior track athlete at Greater Johnstown School District

Scott A. Salsler Memorial Scholarship Fund

To provide scholarship support for local students who are planning to study at the post-secondary level in fields related to music and vocal performance, including education.

Somerset Area School District Class of 1980 Award Fund

To provide an annual award to the senior student who has achieved not only academic and athletic qualities, but has also demonstrated a high degree of responsibility within school and community.

Somerset Area School District Jason Korns Memorial Soccer Award Fund

To provide an annual award to the senior soccer player who has shown the best attitude toward the sport, teammates, and studies.

Somerset Area School District John Harris Memorial History Award Fund

To provide an annual award to the senior student who has displayed outstanding achievement in American History.

Somerset Area School District Robert E. Marteeny Landscape Award Fund

To provide an annual award to the senior student who has displayed outstanding achievement and interest in landscaping.

Somerset Area School District Thelma Lint Weimer Award Fund

To provide an annual award to two senior students who demonstrate outstanding writing ability, one in the writing of poetry and one in the writing of prose.

Somerset School District Extra-Curricular Achievement Award Fund

To provide an annual award to the senior student who has displayed outstanding performance in extra-curricular activities, in memory of Eleanor C. DeLong, Thomas Lansberry, David Higgins, and Rankin Jones.

Somerset School District Junior High Achievement Award

To provide an annual award to a junior high student who has displayed outstanding performance in the past school year, in memory of Millie Matthews, Bill Halverson, Mary Dean Manges, and Bernice M. Young.

Somerset School District Scholastic Award Fund

To provide an annual award to the senior student who has displayed outstanding scholastic achievement, in memory of Dr. Charles C. Barchfield, Mary Dean Manges, Leroy J. Manges, Lilia T. Miller, and James R. Butler.

Sophia Tuinstra Memorial Scholarship Fund

To provide an annual scholarship for a graduating senior at Westmont Hilltop High School who is planning on pursuing post-graduate secondary education or a two-year certification program in a medical or health-related field.

Squillario Family Fund

To provide support for upkeep and maintenance of the Squillario Family Pavilion at Crichton McCormick Park in Portage.

Tika Hetrick, Cory Roadman, and Tucker Memorial Legacy Fund

To provide scholarship support benefiting programs in memory of Tika Hetrick, Cory Roadman and Tucker, including educational scholarships, military and first responder awards, entrepreneurial grants, and animal facility grants in Somerset County.

Tina Weaver Memorial Soccer Scholarship Fund

To provide scholarship support for one girl and one boy from the Everett School District who have played soccer on the high school team and are continuing their education at a post-secondary school.

Tom "Coach" Dixon Scholarship Fund

To provide scholarship support for graduating senior student athletes at Homer Center High School who display good sportsmanship.

Uphouse Family Scholarship Fund

To provide scholarship support for graduating senior students at Somerset Area High School.

Veteran Grove Fund

To provide support for operation and preservation of the Veteran Grove in downtown Bedford, PA.

Veterans Remembered Fund

To support programs important to local veterans.

William Wilt Scholarship Fund

To provide a \$250 scholarship to a graduating senior at United High School.

Worth the Weight Fund

To provide weighted blankets and supportive care for infants experiencing drug/substance detoxification symptoms.



LEGACY SOCIETY 2022

Robert A. Allen*
Walter C. Allen*
Anonymous (40, 2 new)
Anrmjl
Arts Patron Fund*
Lynn and Craig* Ashe
Ridley Banks*
Abe Beerman*
Beverly Berkebile
Susan Berkstresser*
Dr. Frank T. Carney * and
Mrs. Kathryn Carney
Brad Clemenson
George* and Eve Cook
Harry Henderson Cornell*
Jinnie Davis*
Jelorma K. DeMario*
Ann R. Deitle*
Jack and Barbara Demuth
Raymond E. DiBattista*
George Dooley*
Michael Dorosh* and Mary
Locke Dorosh*
Edith M. Dressler
Terry Dunkle
Charlotte Ellis*
Paul Favatella and Marie Russo
Favatella
Irene Panci Gladstone*
Dan Glosser*
William L. Glosser*
Melinda Grass*
Donald L. Green
George A. Griffith
H.C. "Joe" Harned*
Bill and Doris Horner
The Juniper Foundation for
Business Development
and the Trades
Mike Kane and Elizabeth Mayer
Esther L. Keyser
Charles Byron Korns III
Robert and Judith Koveleskie
Dorothy G. Kunkle*

Johanna M. LaBuda*
Elmer and Barbara Laslo
Charles and Susan Levy
Dr. and Mrs. Scott Quinn Little
William and Stacey Locher
Sandra Mackel
David R. Madigan*
Edward T. and Karlice N.
Makuchan
Rose Mardula
Dick and Connie Mayer
A. Keith McGraw* and Caroline D.
McGraw
William Roy Mock
Walter Morris*
Mary Mudry*
Elizabeth H. Neff*
Margaret Ossola*
Ethel J. Otrosina*
Mark Pasquerilla
Ann and Bob Portante
Dr. Harry M. Rhoads*
Ray and Nancy* Rizzo
Dorothy Robinson*
William M. Robinson, Jr. and
Barbara A. Robinson
David Roderick
Donna Jean Russian
Richard and Carol Sarlouis
Sara Shahade
Marlene J. Sipe*
Jane B. Slep*
Carol D. Stern
Robin Strachan
Dr. Robert* and Caryl Swanson
John and Donna Venzon
James C.* and Shirley* Wagner
Anna Marie Weinzierl*
Walter Wood*
Jane Hauger Zeigler

* Deceased

New for this year

PLAN 2022



When it comes to charitable giving, trust matters. The Community Foundation understands that the relationships individuals have with their professional advisors are important, so we work to enhance those connections. Through PLAN (our Philanthropic Leaders Advisory Network), we help to give wealth advisors creative solutions and an enhanced range of services they can provide to their clients, all with a goal of building assets for our community. If you are looking for an accountant, attorney, financial advisor, or other professional—especially when it comes to your estate planning and charitable giving goals—consider contacting one of our PLAN members. To inquire about becoming a PLAN member, reach out to CFA Director of Donor Services Katrina Perkosky at kperkosky@calleghenies.org.



Katrina Perkosky
Director of Donor Services



Lisa Bittner

Somerset Trust Company

Theresa (Terry) Bogovich

Stifel

W. Jeffrey Carey

W. Jeffrey Carey & Associates

Dean Carpenter

Carpenter Financial Services

Joseph A. Carpenter

Carpenter Financial Services

Lindsay Carpenter Benear

Carpenter Financial Services

Samuel Carpenter

Carpenter Financial Services

Lauren Cascino Presser, Esq.

Ayres Presser Elder Law, LLC

Donna Christopher

State Farm

Donald W. Cowie

Cowie McGraw Financial Group

Courtney Custer

The Custer Private Wealth Management Group of Wells Fargo Advisors

Timothy Dabbs

The Custer Private Wealth Management Group of Wells Fargo Advisors

Matthew DiFrancesco

High Lift Financial

Nick DiGiorgio

United Bank

Robert Eyer

Wessel & Company, P.C.

David A. Finui

AmeriServ Trust

Monica Garver

McKinley Carter Wealth Management Services

Thomas Hall

Morgan Stanley

Timothy M. Henry

The Henry Group

Dennis Hunt

AmeriServ Trust

Tracy McKeel

S&T Wealth Management

John Paros

Paros Financial

Michelle Petrosky Moon, CPA

Doug Puchko

Puchko Financial Associates, Inc.

Kayla Puchko Stephenson

Puchko Financial Associates, Inc.

Bill Rice

Laurel Highlands Financial Services

Michael Sahlaney, Esq.

Sahlaney, Dudeck & Hochfeld Law Office

John Saracena, CPA

Barnes Saly & Company, P.C.

Ethan Stewart

Centennial Financial Group, LLC

C. Clyde Thomas, II

Northwestern Mutual Wealth Management Company

Richard Tims

Tims Insurance Agency

Michelle Tokarsky, Esq.

Silverman, Tokarsky & Forman

Matthew Valkovci

S&T Wealth Management

Bob Vamos

AmeriServ Trust & Financial Services

Mark Vibostok

Vibostok Financial Advisors of Janney Montgomery Scott, LLC

Vincent Vibostok

Vibostok Financial Advisors of Janney Montgomery Scott, LLC

Committees

Academic Alumni

Louise Fisher
Wanda Keller*
Connie McClain
Kristine Olsen
Wilda Sanna*
Anita Sukenik
*Deceased

Audit

Amy Edmiston
John Kriak
Mark Pasquerilla

Bedford County Advisory & Distribution

Lynne Ashe
John Blackburn, III
Steven Dull
Haley Feaster
Kellie Goodman-Shaffer
Allen Harr
Alison Hostetler
Matt Otis
Leah Pepple
Stephanie Wingard

Bork Family Fund Advisory

Debbie Bork
David Bork, Jr.
David Bork, Sr.
Jessica Borowitz
Michael Grimes, Jr.
Mark Pasquerilla
James Rihs
Michael Sahlaney, Esq.
William Shulick, Esq.

Distribution

Lynn Ashe
Jodi Clark
Terry Dunkle
Katie Fink
Beth Hullahen
Jen Johnson
Ned Kendall
Sue Mann
Rob McCombie
Melanie Miller
Mark Pasquerilla

Michael Sahlaney, Esq.
Karen Struble-Myers
Michelle Tokarsky, Esq.

Education Advancement

Vickie Beer
Allison Cook Hoffman
Gillian Hurt
Craig Minnick
Pamela Ream
Cathy Wheeler

Engagement

Haley Feaster
Allison Cook Hoffman
Katie Kinka
Kyle Kunkle

Executive

Terry Dunkle
Robert Eyer, CPA
John Kriak
Richard Mayer
Mark Pasquerilla
Michael Sahlaney, Esq.
Sara Ann Sargent
Jeffrey Stopko
Michelle Tokarsky, Esq.

Finance

Vickie Beer
Terry Dunkle
Robert Eyer, CPA
Robert Forcey
Monica Klatt
John Kriak
Kyle Kunkle
Alan Metzler
Mark Pasquerilla

Investment

Samuel Catanese
Casey Craig
Kim Craig
Steven Dull
John Kriak
Mark Pasquerilla
Craig Saylor
Tyler Trimbath
Joel Valentine

Marketing

Olivia Bragdon
Dennis Brawley
Lauren Cascino Presser, Esq.
Kellie Goodman-Shaffer
Rev. Sylvia King
Mark Pasquerilla
Kayla Puchko Stephenson
Dr. Leah S. Spangler
Colleen Tretter
Deanna Weaverling

Portage Regional Endowment

Chris Baxter
Matt Decort
George Fetsko
Michael Kiel
Russell Kiel
Brent Kinley
Stephanie Schriff
Randy Stager

Somerset County Advisory

Vickie Beer
Henry Cook
Theodore Deskevich
John Fiesta
Allison Cook Hoffman
Matthew Melvin, Esq.
Lana Miller
Mark Miller
Pamela Ream
Carol Stern
Commissioner Pamela Tokar-Ickes
Cathy Wheeler

Somerset County Community Fund Distribution

Hon. Scott Bittner, Esq.
Sharon Clapper
Theodore Deskevich
Bruce Hottle
Lana Miller
Melanie Miller
Carol Stern
Cathy Wheeler
Brian Whipkey



Board of Directors

Mark E. Pasquerilla – Chair

Chair, CEO & President,
Crown American Realty Trust

Michael Sahlaney, Esq. – Secretary

Partner, Sahlaney, Dudeck &
Hochfeld Law Office

Terry K. Dunkle – Treasurer

Retired Bank President/CEO

Michele Beener

President, Aspire Grant &
Development LLC

John Blackburn, III

Retired, Pennsylvania State Police

Lauren Cascino Presser, Esq.

Ayres Presser Elder Law, LLC

Alan Cashaw

Retired, Chemical Engineer

Robert Eyer

CPA & Partner, Wessel & Company

Robert Forcey

Publisher, The Tribune-Democrat

Greg Glosser

President, M. Glosser & Sons

John M. Kriak

President, Group Genesis, LLC

Richard H. Mayer

Retired Publisher,
The Tribune-Democrat

Dr. Tom Otis

President, Okard, Inc.

Sara Ann Sargent

President, Sargent's Group

Randy Stager

Retired, Stager Chevrolet

Carol Stern

Retired Assistant Director/Director
of Donor Services, Community
Foundation for the Alleghenies

Jeff Stopko

President/CEO AmeriServ Financial

Michelle Tokarsky, Esq.

Silverman, Tokarsky, & Forman LLC

Colleen Tretter

Registered Nurse

Deacon Jeffrey Wilson

Program Director, Flood City Youth
Fitness Academy

In Honor Of

Aaron Conway
Aggie Komprado
Alan and Elaine Metzler
Alex Svirsko, Jr., Esq. and Dawn Svirsko, Esq.
All Veterans - Present, Past and Deceased
Amber and Jay Richards
Anne and George Fattman
Annette Pompa
Anthony and Deb Falvo
Anthony and Lenore (Norie) Portante
Anthony Wess
Armed Forces and Families
Barbara and Jack Demuth
Betty Sue Hodge
Betty Zubeck
Bishop McCort Catholic High School Class of 1966
Bonnie Weakland
Brad Clemenson's Birthday
Broyden Mazer
Brian H. Lehman
Capt. (R) William P. Garland, USNA '77 and Will Garland, USNA '10
Carol Krone
Cassandra Solarczyk
Cheryl Sherbine
Cindy Speck
Clients of Centennial Financial Group
Col Bob Portante, USMA
Classmate and Friend
Connie Mayer
Connor Sweeney
Corey McCombie
David McCullough
Dean H. Metzler & Anthony Falatico
Deb & Anthony Falvo
Denise Boserman
Dick and Connie Mayer
Dr. Charlene Dukas
Dr. Freda Sattel's 100th Birthday
Dr. Katherine Erlichman
Ed and Debbie Zapola
Ed and Mary Rice
Elizabeth Mayer
Ellie "Elite" Mayer Kane
Eric R. Metzler
Erica McCombie
Frank Colpini
Gayle Price
Harry M. Adams
Heather and Bill Brice
Helen Hudec
Herb Sendek, Sr., Windber Class of 1951
Hornick Sisters: Fran Smith, Karen Hornick and Michelle Crowley
James Mayer Kane
Janet Just
Jane Younker
Jennifer, Jason, Ellie and Einstein
Jim and Jane Stratton
Jiovani Maser
John Pencola
Joseph Frumkin and Debra Mayer
Joyce Bobolsky
Kathy Vuckovich
Katie Lynch
Katrina A. Pyo
Kimber Cober
Linda Suter
Linda Wigfield
Marcia L. Metzler
Margaret and Harry Stump
Mark Wack
Mark Miller's Retirement
Mike Kane
Mike Kane and Elizabeth Mayer
Mike Smith
Misty Williams
My Dad
N. Jean Feaster
NAACP Johnstown Unit
Nancy Kozuch
Natalie Logue
Nick Campitelli
Nico, Sophia and Roman Long
PAHS Class of '66
Pamela J. Mayer, Esq.
Paul and Germaine Huber
Philip, Ann, Ned & Marge Stager PMEA
Portage Rotary Club Members - Past and Present
Raymond Heil
Regis Kingera
Ref. Lt. General Raymond Palumbo
Richard Abrams
Richard and Connie Mayer

Richard Knavel
Robert E. Sease
Rosage Family
Sam Zambanini
Sandi Lando Welch
Sarah Brown
Sarah Cheskirui Creider and Gabriel Washington
Service Personnel from Windber
Sheryl Shipman
Ted and Joann Deskevich
Ted and Phyllis Myers Family
The Berkey Family Army Veterans - Russell M. Berkey, Ronald R. Berkey and Dennis L. Berkey
The Berkey Family Navy Veterans - George W. Wright, Richard D. Berkey, Nathan D. Berkey
The Scanlon Family
Unity Coalition of the Southern Alleghenies
Vogues - Baran Family
Vietnam Veterans
Zachary Davis-Reese and the Boy Scouts

In Memory Of

Agnes "Aggie" McConaughy
Alan and Regina Kiel
Alan L. Miller
Andrew and Helen Barno
Andrew and Helen Vandzura
Andrew M. Teno, Jr.
Andrew Wilcox
Andy Dancha
Ann Samo
Anna Wozniak
Anne Doty
Anthony and Mary Ann DiBuono
Ardith Maul
Barbara Kinley
Bertha Carr, 1938 Windber graduate
Bertha Gerula
Bertha Wilinsky Walsh
Betsy Fetterman
Beverly Sanders
Beverly Swearingen
Bill and Laura Trexler
Bill Linhart
Bob and Barb Yetzko
Bob Forquer
Bryan Lee Philippi, Jr.
Carl "Bud" H. Teeter IV
Carmine DeMatteis
Cecile (Shucko) Wisnosky Naugle
Cecilia Kline
Chad Scanlon
Charles Cann
Charles E. Bush III
Cheryl Adams
Chloe Anne Dupstadt
Christie Becker
Christopher "Bub" Ream
Christopher Frapwell
Christopher T. Wilson, Sr.
Cliff Inman
Coach Craig Waite
Coach Ron "Link" Younker, WASD Class of '50
Coach Walter Ladolinski
Corey Leech
Cousin Ron Fisher
Dale Murray
Dave Pickett
David E. Kelley
Dayton L. Naugle, Sr.
Dean and Angela Damin
Debbie Herwig
Deceased Members of the Pfeilstucker Family
Deiro M. Desmond
Denise Mori
Dennis V. Walter (Lindy's Brother)
Denny and Weez Thomas
Dick Cann
Dominick Stumpo
Donald Hazlett
Donald R. Bowers
Doris Ann Mickens
Dorothy "Nan" Flegle
Dorothy Stahl
Douglas Liscomb
Dr. and Mrs. John Logan
Dr. CM Hochrein and Dorothy Hochrein
Dr. Donald Koval
Dr. Joel Borkow
Dr. Larry Mastrine
Edna and Walter Howanek
Edward and Sherley Craig
Eleanor Lantz
Eleanor Mitrik
Elijah Straw
Erin Hostetter
Ernest H. Landeros

Ethan Stoker
Eytan Pick
Florence Herring
Florence I. (Ritchey) Mock
Francis David Boida
Frank and Emma Hodgkinson
Frank DiDonato
Frank Weaver
Franklin A. Tepiltza
Fred Burnfelt
Fred Schaffranek, Jr.
Galen R. Head, Jr.
Gary and Jackie Kelly
Gary Fulton
George and Miriam Kincaid
George and Ruth Salovich
Gerald "Jerry" Chverchko
Gina Jackson
Glen George
Grace McCabe
Gregory Naugle
Grover and Clara Sease
Gwen Swick
Harry Rhoads
Harvey Supowitz
Hedva Piterman
Helen and John Koshak
Helen Yoder
Hyatt and Grandma Dorothy
Hyatt Walker Flegle
Irene and Oliver Robson
Irma B. Yarnick
Jack Figard
James A. Kissell
James and Betty Cadwallader
Jamie Cordial Hall
Janet Toth
Jeffrey Dull
Jeffrey L. Heiple
Jennifer Hege Demuth
Jerome A. Yetzko
Jerome Neilan
Jerry Schultz
Jerry Szczer
Jo Seaton Tyson
Joey
John "Ted" Hollern
John (Benny) Adams
John (Jack) and Marian Hoover
John and Irene Bandzuh
John and Lea Derrick
John and Mary Gavlak
John Bopp
John Hodas
John Hornick
John Lewark
John Morell
John Ross Lewark
John S. and Gloria Molchany
John Sherbine
Jon Womp Wompe Hernandez
Joseph and Catherine Solarczyk
Joseph Maurer, Sr.
Josephine Banks
Josh Kuzmyak
Joyce Gintzer
Judy Grove
Judy Hinton
Julia V. Heidel Modany
Julius and Lucy Hodge
Justin Donald Ellis
K-9 Officer Titan
Kai Paul Hrabovsky
Karen Cyran
Karen Marie Caurvina
Katie Whysong
Kenneth Dranzik
Kiersten Alexandra Robertson
Krista Chverchko
Laina Haney
Layton "Cuppy" Thrower
LesKay Vetter
Leslie Lehman-Clemenson
Lewi Hahn and Chris Hughes
Linda J. Sobieski
Lindsay Gara
Lindy Dodson
Lionel E. Mickens
Lina Little
Llair and Blanche Reese
Lorain Jones
Loretta Stumpo
Lorraine and Albert Dalby
Louis G. Galliker, III
Louise Dunlap
Luke Patton
Luke Irtz
Lyle David Popish
Margaret
Margaret Prokop
Marguerite Hannan
Marguerite Whitfield
Marilyn Englehart,
Former Librarian, Central Cambria School District
Marilyn Shorfo
Mark Sherbine

Mary and James Gerhardt
Mary Ellen Lutz and Melissa Cardeb
Mary Lou (Cassisi) Kiel
Mary Petrik Balas and Olga Balas
Marilyn
Mary Solarczyk
Melissa Hagberg
Members of the Bishop McCort Catholic High School Class of 1966
MG Harry Greene
Mike Weyant, WAHS Class of '74
Mina and Barney Lucas
Mish George, my Uncle and a deceased World War II Veteran
Mitzi Budney
Mr. and Mrs. Edward Walsh
Ms. Mary McCary
My Dad, Jim Kocher and my sister, Linda Stuff
Neal and Marjorie Stager
Nick and Mary Vrabel
Nick and Shirley Azzarelo
Officer Matthew Krupa
Olivia "Liv" Catherine Red
Ora Jean Ralph (OJ)
O'Shea and Patuch Families
Pamela Olsen Iovino
Pap Palochick
Patrick C. Stewart
Paul and Violet Cummings
Pauline Kapitan
Peg Enderline
Peggy Ribblett
Ralph and Susan Kincaid
Ralph Chioldo
Randy Younker, WASD Class of '69
Ric Szelang
Rita (Stoltz) Moyer
Rita and Dorothy Mack
Robert E. Parks
Robert F. Wilson
Robert George
Robert Kabo
Robert L. Veney, Jr.
Robert Roy Laird
Robin K. Pfitman
Rodney Howsare
Ron and Randy Younker
Ron Fisher
Ron Wright
Ronald Decker
Ronald S. Rakar
Ronald S. Rivera
Rose Gerhardt Secrist
Roy C. Adams
Russell A. Keen, Jr.
Ryan Fleming
Scott A. Salsar
Sgt. John Edward Allen
Shawn Carota
Sheri Ratosky
Sherry Cole
Shirley Smith
Sidney Goldblatt, M.D.
Sophia Iunistro
Stanley Ozecek
Stephen Shaz Yuhus, Windber Class of 1945
Steve and Rose Gavlak
Stohon Family Members
Stuart Leman
Susie Chappel
Ted and Mary Blackburn
Ted Myers
Teddie
The Hudak and Kleman Families
Theodore and Philomena Karwoski
Thomas Klenta
Thomas Litinger, Jr.
Tika, Cory and Tucker
Timothy Michrina
Tina M. Hersh
Tom and Louise Varner
Tom Sherwin, WAHS Class of 1960
Tommy Cassidy
Trudy Barefoot
Tucker
Velma Roberts-Young, the best mother ever
Vicki Bertolini
Victoria Gibson
Vincent Michaels
Wallace Litinger, Jr.
Wayne and Shirley Baxter
Wendy Logue
Wilda Sanna
William F. Strachan
William J. Sweeney
William Wilt
William Yurchik
Willian J. Sweeney
Wilmer Lashley
Yolanda Buchan

NONPROFIT.ORG
U.S. POSTAGE
PAID
Johnstown, PA
Permit No. 150

Our 2022 Digital Annual Report is now available!



Visit cfalleghenies.org/annualreport
to find the full digital edition, including:

- Detailed financials and overviews
- Full lists of donors, grants, and funds
- Stories about our special initiatives and grassroots support
- Ways to get involved or begin creating your legacy today



COMMUNITY FOUNDATION
FOR THE ALLEGHENIES

216 Franklin Street, Suite 400 • Johnstown, PA 15901
814.536.7741 • info@cfalleghenies.org